

Review of  
**TCA Quadrant Add-On Airbus Edition**

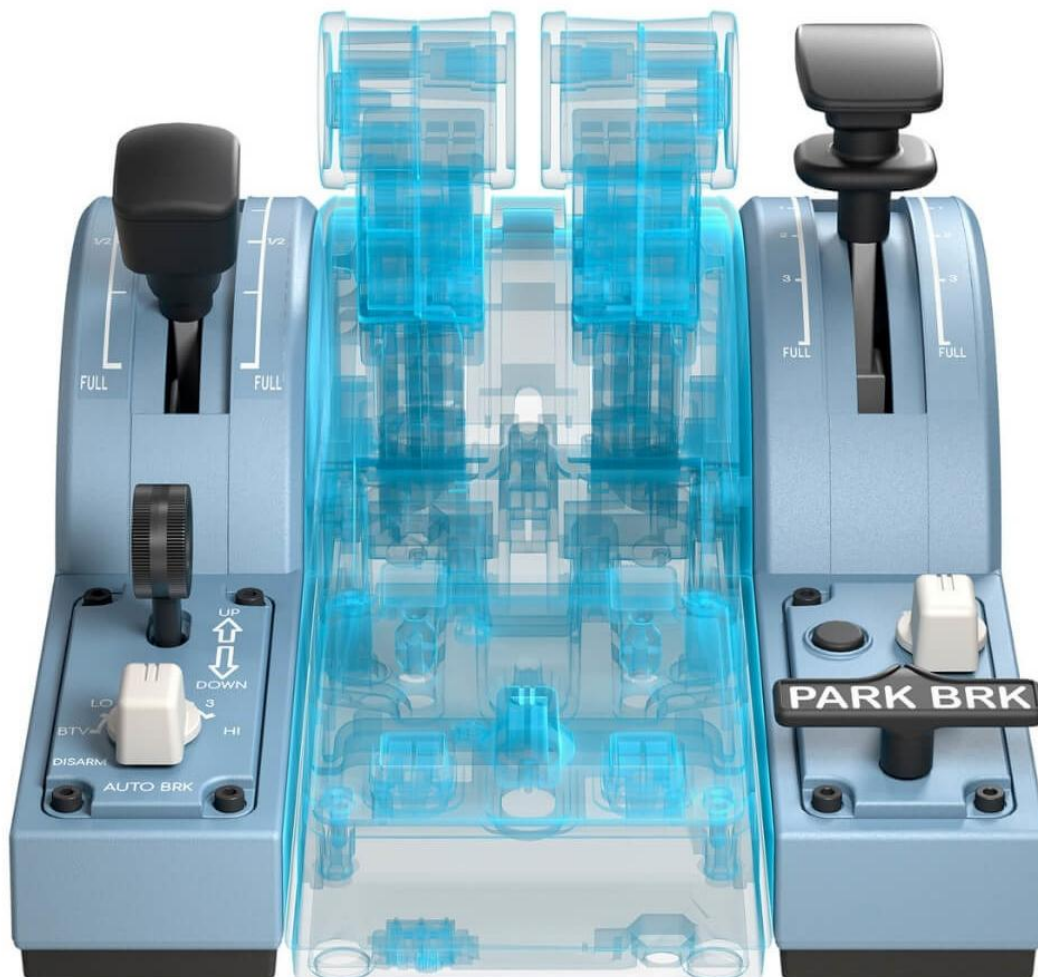
Created by ThrustMaster

*Intro*

---

Quality hardware to increase the flight simulation experience is an everyday growing market and new products keep coming up and being released to the enthusiastic flight simulation community. Some of the hardware is good and some is outstanding with a high level of professionalism and quality.

I had previously had the exquisite experience of testing a replica Airbus throttle quadrant created by ThrustMaster – that experience was totally awesome and using the throttle quadrant was a great way of bringing my flight simulation experience to a higher level. Today I am fortunate to be able to also test and review the new side pieces for this throttle quadrant, making the quadrant an even more interesting piece of hardware. The pack that is covered within this review is the **TCA Quadrant Add-On Airbus Edition**.



## *Packaging, Delivery and Assembly*

---

I ordered these new modules (side pieces) directly at Thrustmaster and the very same day I ordered them, I received an SMS from the forwarder FedEx that the pack was already received by them and the estimated delivery time would be the next day (Friday afternoon). This means that from I ordered the modules till I received them, was only 1½ day for both packaging and the entire transport from their warehouse in France and to my address in Denmark. That is really quick which is perfect because when you order a new toy, you also want it super fast and this was just perfect.

Both modules were packed within one box. The outer box was a transport box consisting of hard thick multi-layer cardboard, which is perfect for transportation and provides a great support for the inner box and the modules within. Inside the transport box was the display box which was made from thin cardboard and which also fitted perfectly into the transport box providing extra good support.

Opening the inner box I now found both modules nicely packed within a 2-piece form-shaped thin cardboard that created excellent support for each module. Additionally each module was also packed within a thin foil or plastic bag – I think to prevent potential scratching during packaging or unpackaging. Overall the packaging was superb with great support for the modules even during a long and bumpy delivery.

Included in the box are the two modules, two connection cables type SATA, extra fittings and also extra screws. There are no tools included which is okay since a prerequisite for using these modules are, that you also have the throttle quadrant. Included in the throttle quadrant was a Phillips screwdriver and this one is all you need for the modules.

There is no assembly needed to get the modules working other than connect each module to the throttle quadrant using the SATA connector cables included. However, I do recommend that you also mount the fittings using the screws to secure the modules properly to the throttle quadrant.

Additionally there are also a very short assembly guide included which does not provide much information. Here I would recommend visiting the <https://support.thrustmaster.com/> webpage where you can find the modules and select to download the manual/guide in PDF format. The download is quick due to a good connection to the server but also because the PDF file is not that big.

The manual is named *TCA Quadrant Add-On Airbus Edition* and is a 287 pages long PDF manual describing all the various technical information. First there is a layout of the functions on each module and the possible customization that you can perform. Secondly there are a ‘how-to-mount’ the modules to the throttle quadrant using the fittings and screws and how to place the entire setup correctly on a support. There are also described how to install software drivers and how to map functions to each switch or lever, but this will be covered in the section of *Connection & Performance*.

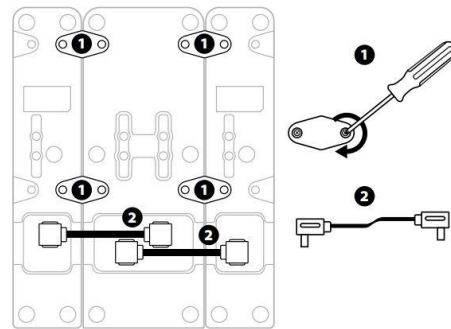
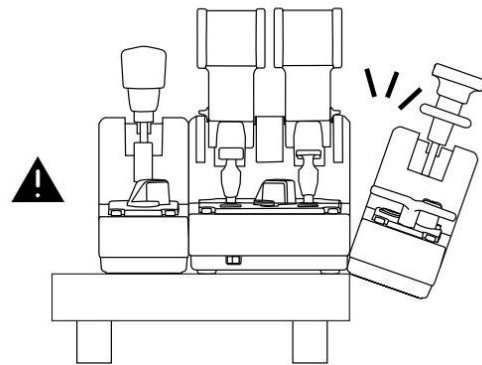
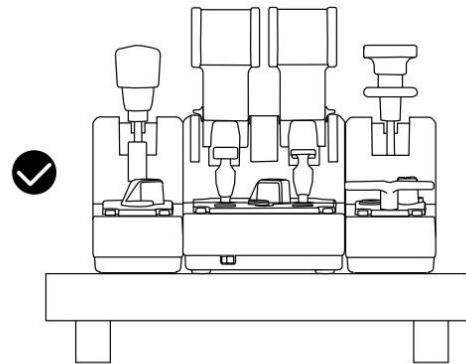
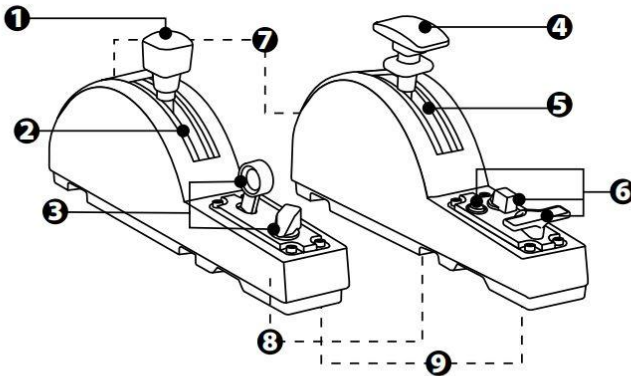
You don't have to read all the 287 pages since the manual is written in multiple languages to support most possible customers, and to make sure that most, if not all simmers, will understand and get all the basic information about the usage etc. of each module. Each language is about 14 pages long so it actually takes no time to complete the read. I would strongly recommend taking the time to read the manual just to get to know all of the functionality of the modules.

# TCA QUADRANT ADD-ON AIRBUS EDITION

User manual

- EN
- FR
- DE
- NL
- IT
- ES
- PT
- RU
- CS
- TR
- PL

## TECHNICAL FEATURES



- CS
- TR
- PL
- 日本語
- 繁體中文
- 한국어

## *Look & Feel*

---

Taking a closer look at the modules I became really impressed. Each module is inspired by the real Airbus flaps and spoilers lever modules and the outcome is absolutely very realistic in the looks. Both modules are made from high quality hardened plastics which of course helps keeping the production costs to a minimum, but also keeps the weight to a minimum making the modules more affordable to transport. I would personally have loved to feel the levers being made from metal or simply metal coated which I think would have increased the realism and the experience. That said, the core of the levers or more precisely the cylinders, they are both metal cylinders for better quality, steadiness and durability.

The modules are two different modules; one module is the spoiler module that features a lever controlling the spoilers and a toggle switch with a knob shaped as a regular but downscaled gear handle. This module is to be placed on the left side of the throttle quadrant. Additionally there are also an auto-brake selection rotator switch with an Airbus style rotator knob with the following stops 'Disarm, BTV, LO, 2, 3, HI'. The knob for the rotator switch is downscaled but still very realistic and the lever for the spoilers I think is quite fair and realistic in size. I cannot confirm if the scale is 1:1 but it feels great and very realistic and the look is very authentic. In total this module features one toggle switch, one rotator switch and one axis.

The other module features the flaps lever, a rudder trim left/right rotator switch with a spring load for self centering - you could call it a Mom-Off-Mom rotator switch. The module also has a pushbutton for centering the rudder trim as well as a twist switch for the parking brakes. The twist switch is probably a fixed rotator switch with a beautiful and very authentic parking brake knob on top of it. The flaps lever is very authentic with the characteristic shape from the real Airbus lever and the size also seems to be in accordance to real life. The rotator switch knob for the rudder trim is downscaled as like the auto-brake knob also is, and the knob for the parking brake seems to be quite well in accordance to real life. All knobs are all made from quality plastic materials but still feel very real and authentic. In total this module features two rotator switches, one pushbutton and one axis. This module is to be placed on the right side of the throttle quadrant.

Both levers – the spoilers and the flaps lever has built-in detents on both the axes – this detent can be enabled or disabled as you like which will be described later in the review under the part with *Connections & Performance*. Both levers / axes are super smooth and provide a very nice feeling and a very nice flight simulation experience. Each axis also features an adjustable friction option which is located on the front end of the base – this function works similar to the adjustable friction screw on the throttle quadrant where you can either turn the screw to the left for a looser motion or to the right for a more tight and firm motion of the levers. The default setup is 50% meaning right in the middle. Please do be cautious when tightening the friction screw so that you don't force the screw to much which will damage the friction function.









## *Connection & Performance*

---

Connecting the modules are quite simple – there are no USB connectors so you cannot connect these modules directly into your computer. You need the throttle quadrant as base before being able to add these extra modules to your setup. Connection is done using the two SATA connectors found on the bottom of the modules and the throttle quadrant – the two cables are included in the modules pack.

When the modules are connected, you are now able to use them as well as to also assign various functions to them through the built-in assignment tools of each flight simulator. I have tested the modules on the following platforms: Lockheed Martin Prepar3Dv4.5, Laminar Research Xplane11 and DCS World 2.5 – I haven't tested the modules on FSX or the new MSFS2020 but I would imagine that they could easily be recognized as gaming ware through the throttle quadrant. You can also use the T.A.R.G.E.T. software provided by Thrustmaster or even FSUIPC, LINDA, SIOC, C++ or similar I would assume.

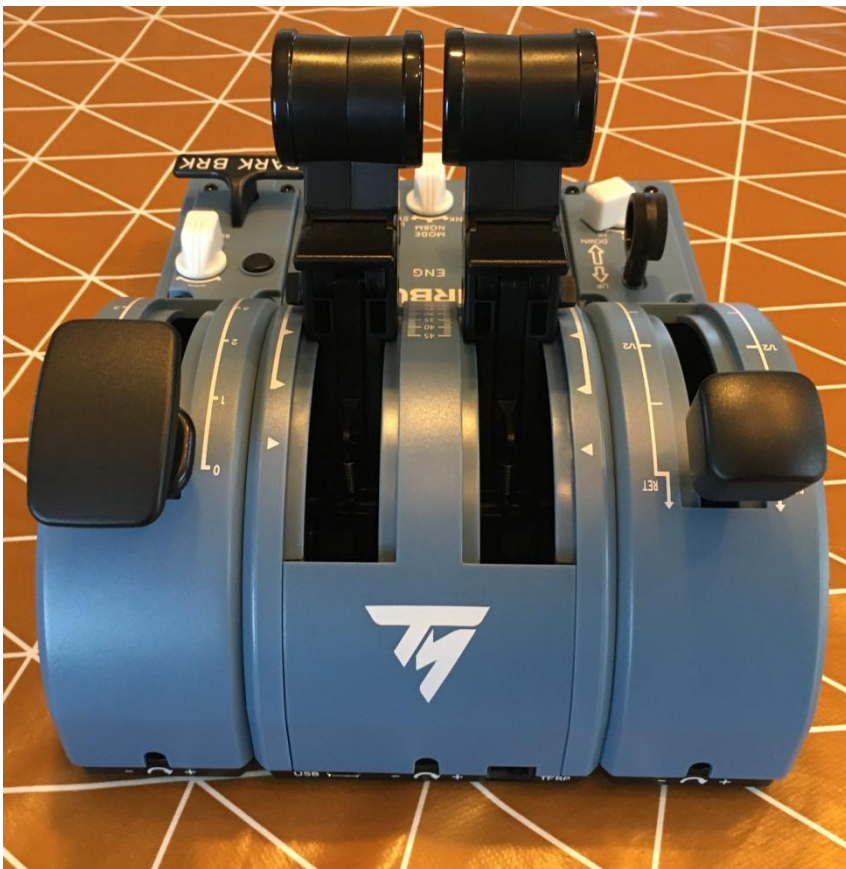
When you assign functions through the assignment tools within the flight simulators, you need to select the throttle quadrant to be able to assign the functions. You have a total of two axes and 15 buttons that can be assigned as you prefer providing you with a good number of assignments to your home cockpit simulator setup. If you have just one throttle quadrant, just select that one within the assignment tools menu and you can now assign functions for both the add-on modules however, if you have two throttle quadrants connected in between the add-on modules, the assignment will have to be split in two. This because the spoilers module is now connected to the left throttle quadrant which as default could be named 'ENG 1&2' and therefore to assign functions to this module you will have to select the FCA ENG 1&2 within the assignment tools menu. The exact opposite for the flaps module which is then connected to the right throttle quadrant which as default could be named 'ENG 3&4' and therefore you need to select this throttle quadrant within the assignment tools menu to be able to assign functions to that module.

The modules feature the exclusive H.E.A.R.T. technology also known as 3D Hall Effect with magnetic sensors and the letters stand for Hall Effect AccuRate Technology. Each lever (spoilers and flaps) have a total of 65536 values on the potentiometers providing great accuracy and feeling when using the levers.

There are not many, actually no other connectors to be found on the modules other than the SATA connectors, and the modules are ment to be assembled with one on each side of the throttle quadrant which of course is not according to real life – in real life you here have the elevator trims instead. Both modules are in real life placed further back from the throttle quadrant, but never-the-less, then this idea and setup is absolutely awesome.



By flipping over the modules and taking a look at the bottom of the modules, you will there find two screws on each module which you can unscrew and take out the internal part. This part you can turn 180 degrees and put back in – hereby you can now either enable or disable the detents on the levers.





## *Conclusion*

---

To wrap up my experience of the TCA Quadrant Add-On Airbus Edition built by Thrustmaster, then this add-on set is perfectly in line with the throttle quadrant – it is beautiful, it is very authentic and certainly a high quality set featuring 3D hall effect magnetic sensors for a super accurate experience.

The set is professionally built with the usage of high quality plastics and with metal cylinders for each lever for better sturdiness, feel and durability. The surface is a smooth Airbus blue paint that is indeed very much in accordance to real life and furthermore each module also features authentic laser engraved legends that makes the frostings on top of the cake.

The look is certainly very authentic even though some parts are downscaled, and the feeling is just awesome. The flaps lever knob is perfect as well as the spoilers lever knob and they just add greatly to the overall impression and experience of using these beautiful add-ons.

If you like high quality hardware, this is absolutely a set that I would recommend. Even more if you like flying Airbus aircrafts, then this is a must have. The price is fair, the quality is high and the experience that I got using these add-ons, were defiantly lifted to a higher level. Best of all, you can also use these ad-ons for other aircraft styles from Boeing to GA to Turboprops etc. meaning that the set is also a very versatile set, and where you can easily either enable or disable the detents on each axis.

The add-on modules scored a superb 4/5-Star rating, and they are absolutely a set that I most certainly will recommend. High quality modules, great flight simulation experience and all for a very fair price.

Thank you Thrustmaster for bringing these awesome add-ons out to the flight simulation community – they are beautiful!

## **Rays Aviation**

